

# MODULE 11 L02

## Urinary System: Tracts

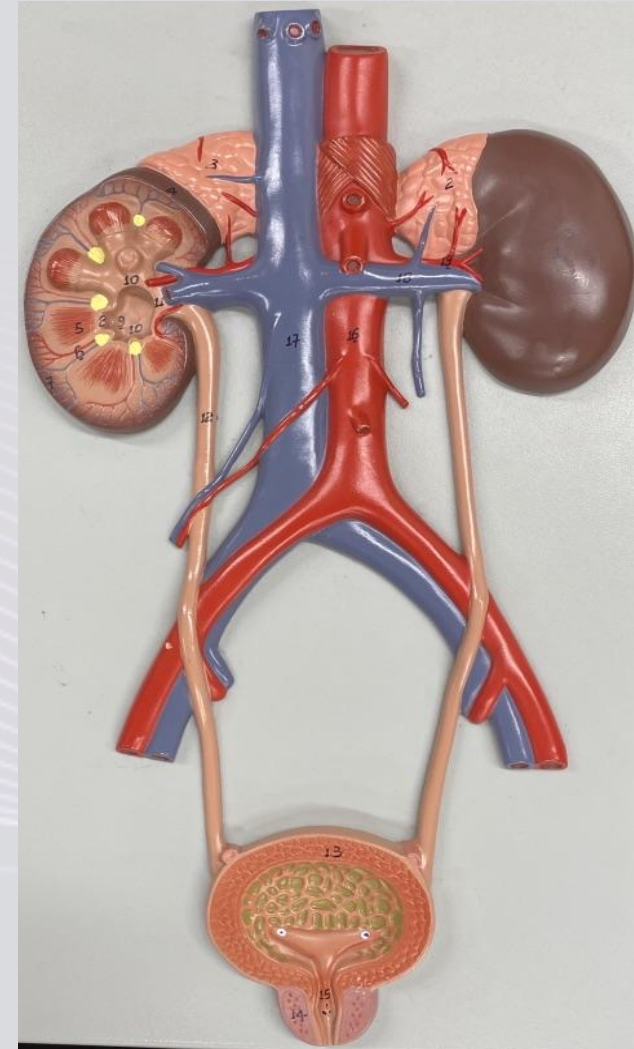
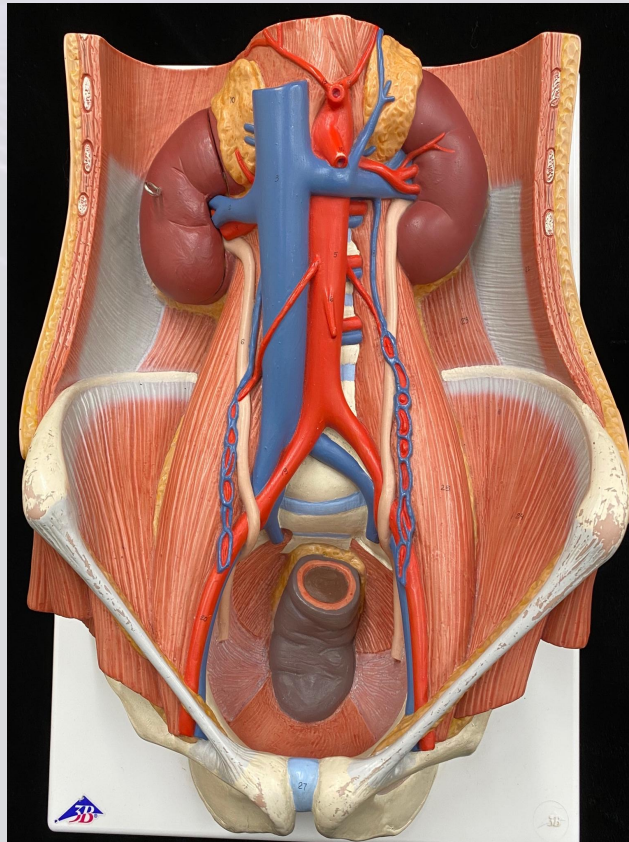
Dr. Lisa Brinn

[lbrinn@fiu.edu](mailto:lbrinn@fiu.edu)



# Urine Transport

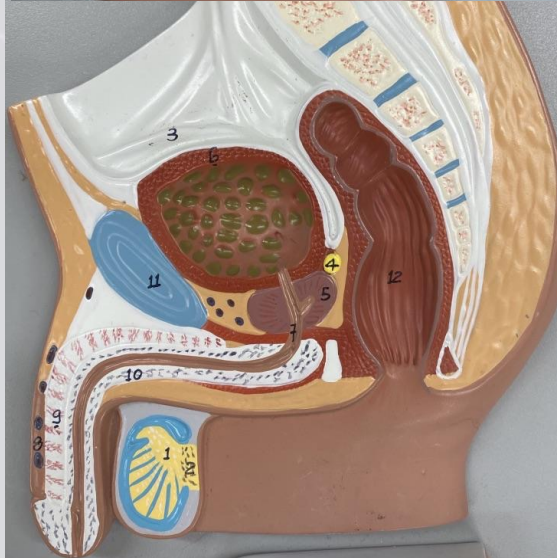
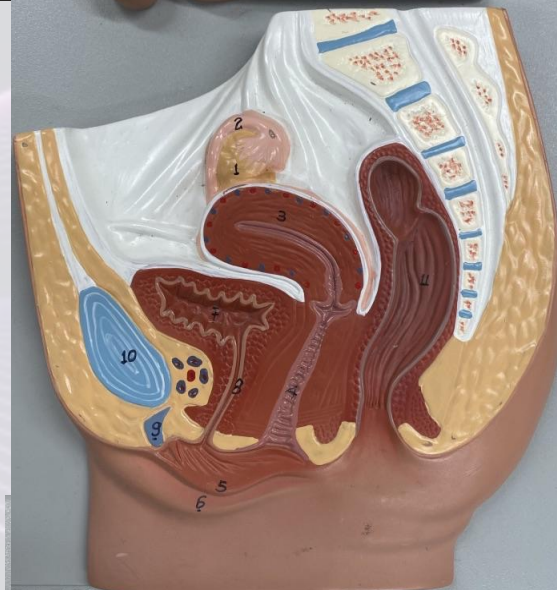
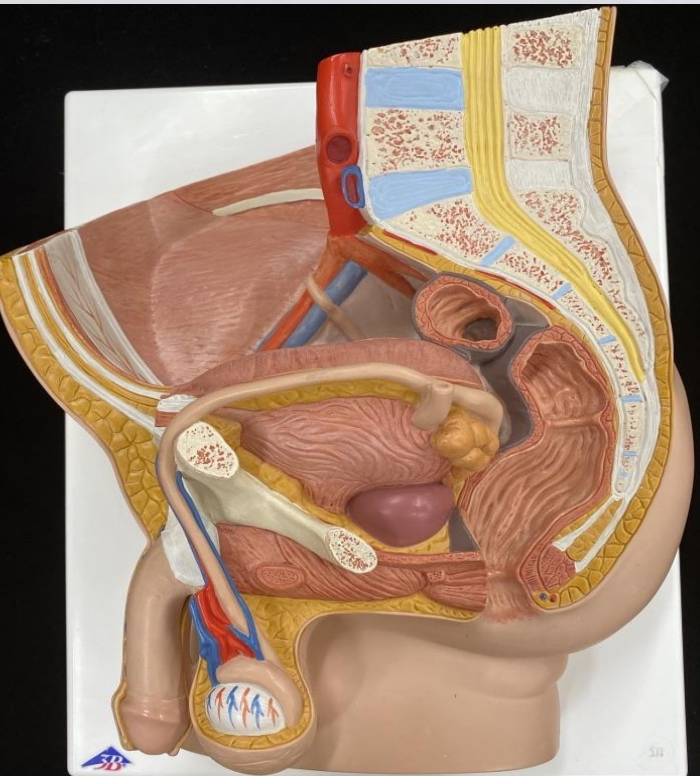
- Done by ureters
  - ❖ From renal pelvis
  - ❖ To urinary bladder





# Urine Storage

- Done by urinary bladder
  - ❖ From ureters
  - ❖ To urethra





# Urine Elimination

- Done by urethra
  - ❖ From urinary bladder
  - ❖ To outside

